

ORIGINAL ARTICLE

Open Access

Hepatocellular adenoma with malignant transformation in male patients with non-cirrhotic livers

Song-Lin An¹, Li-Ming Wang¹, Wei-Qi Rong¹, Fan Wu¹, Wei Sun², Wei-Bo Yu¹, Li Feng¹, Fa-Qiang Liu¹, Fei Tian¹ and Jian-Xiong Wu^{1*}

Abstract

Introduction: Hepatocellular adenomas (HCAs), with a risk of malignant transformation into hepatocellular carcinoma (HCC), classically develop in young women who are taking oral contraceptives. It is now clear that HCAs may also occur in men. However, it is rarely reported that HCAs with malignant transformation occur in male patients with non-cirrhotic livers. This study aimed to characterize the malignancy of HCAs occurring in male patients.

Methods: All patients with HCAs with malignant transformation who underwent hepatectomy at the Cancer Institute and Hospital, Chinese Academy of Medical Sciences and Peking Union Medical College between January 1, 1999 and December 31, 2011 were enrolled in the study. The clinical characteristics as well as radiologic and pathologic data were reviewed.

Results: HCAs with malignant transformation were observed in 5 male patients with non-cirrhotic livers, but not in female patients. The alpha-fetoprotein (AFP) levels were higher in patients with HCAs with malignant transformation than in patients with HCAs without malignant transformation. The diameters of the tumors with malignant transformation were larger than 5 cm in 3 cases and smaller than 5 cm in 2 cases. The 5 patients were all alive without recurrence by the end of the study period. The disease-free survival times of the 5 patients were 26, 48, 69, 69, and 92 months.

Conclusion: Our results indicate that resection would be advised even if the presumptive diagnosis is adenoma smaller than 5 cm in diameter, especially in male patients.

Keywords: Hepatocellular adenoma, Malignant transformation, Hepatectomy

Background

Hepatocellular adenomas (HCAs) are uncommon and essentially benign tumors of the liver. HCAs occur predominantly, but not exclusively, in young women taking oral contraceptives [1,2].

The annual incidence of HCAs in long-term contraceptive users is 3–4 per 100,000 [1]. These data were, however, recorded in the 1970s from a very limited number of patients and have not been updated since. HCAs have also been described in association with rare

conditions such as glycogen storage disease or androgen treatments [3,4].

HCAs in men are rare and usually solitary [5–8]. Patients with HCAs are often overweight with one or several features of the metabolic syndrome. Because of the risk of malignant transformation into hepatocellular carcinoma (HCC), resection of the nodule is recommended even for nodules smaller than 5 cm [9,10].

HCAs are caused by benign proliferation of hepatocytes with high glycogen and fat content, and they lack normal hepatic architecture. HCAs usually present as solitary or multiple tumors that may reach up to 30 cm in diameter [11].

Over the past few decades, several case reports on HCAs supporting the risk of malignancy were published

* Correspondence: dr.wujx@hotmail.com

¹Department of Abdominal Surgery, Cancer Institute and Hospital, Chinese Academy of Medical Sciences and Peking Union Medical College, 17 Panjiayuananli Road, Chaoyang District, Beijing 100021, P. R. China
Full list of author information is available at the end of the article

[12-22]. Therefore, it has been accepted that HCA could be transformed into HCC [14-17]. However, the risk of malignant transformation of HCAs cannot be reliably quantified yet. Several studies have shown that approximately 4.2% of patients whose HCAs have been resected had pathologic evidence of HCC within their HCAs [11]. The risk of malignant transformation is associated with the subtype of mutated β -catenin and the size of the HCA [11,23]. A study showed that malignant transformation of HCA is unusual for nodules <5 cm [11]. However, detailed molecular studies would be required to prove a direct link between adenoma and carcinoma.

HCCs that developed from HCAs are typically well differentiated without vascular invasion, perforation of visceral peritoneum, or satellite nodules. The alpha-fetoprotein (AFP) level is usually normal and therefore not diagnostically reliable [24,25]. If tumors are large (>5 cm) in diameter, the prognosis is relatively good compared with HCC patients with cirrhosis [25].

In this study, we analyzed the information of HCAs with malignant transformation, comparing with that of HCAs without malignant transformation, and aimed to characterize the malignancy of HCAs occurring in male patients.

Patients and Methods

Patient selection

All patients who were diagnosed with HCA at the Cancer Institute and Hospital, Chinese Academy of Medical Sciences and Peking Union Medical College between January 1999 and December 2011 and underwent radical surgical resection were included in this study. Patients with severe cardiorespiratory, liver failure, renal failure, or other malignancies at the time of diagnosis were excluded. The following factors of the patients were assessed: demographic characteristics (age, sex, alcohol intake, tobacco use, and weight), laboratory indicators including hepatitis B surface antigen (HBsAg), AFP, platelet (PLT) count, alanine aminotransferase (ALT), albumin (ALB), gamma-glutamyl transferase (GGT), total

bilirubin (TBIL), and international normalized ratio (INR) of prothrombin time (PT), tumor parameters (tumor size and number), and operative and perioperative variables (operation time, blood loss, and blood transfusion). This study was approved by the Ethics Committee of the Cancer Hospital, Chinese Academy of Medical Sciences.

Treatments

The patients with HCA with malignant transformation underwent hepatectomy with margins >1 cm: right lobe irregular hepatectomy or left lateral lobe resection. None of the patients had received any other therapy for HCC, either preoperatively or postoperatively (Table 1). The HCA patients without malignant transformation received irregular hepatectomy with negative margins.

Follow-up

All patients were followed after operation at 3-month intervals for the first year and at 4- to 6-month intervals thereafter. The follow-up program included serum AFP assay, liver function test, abdominal ultrasonography, and chest X-ray examination. Enhanced computed tomography (CT) or magnetic resonance imaging (MRI) was performed every 6 months for surveillance of recurrence. In cases where a suspicious recurrent or metastatic lesion was detected, MRI or hepatic angiography was employed to consolidate the diagnosis.

Statistical analysis

Statistical analysis was performed by using SPSS 17.0 software. Continuous variables of normal distribution are presented as mean \pm standard deviation (SD) and compared by using the independent *t* test. Continuous variables of non-normal distribution are presented as medians and interquartile ranges (IQRs) and were compared by using the Mann-Whitney *U* test. Categorical variables were compared by using Fisher's exact test. In all cases, statistical significance was defined as $P < 0.05$.

Table 1 Characteristics and laboratory results of patients with hepatocellular adenomas (HCAs) with malignant transformation

Case No.	Sex	Age (years)	BMI (kg/m ²)	Sm	Al	ALT (U/L)	GGT (U/L)	TBIL (μ mol/L)	ALB (g/L)	INR	HBsAg	HBsAb	HBcAb	AFP (ng/mL)
1	Male	40	23.99	+	-	35	137	18.3	46.3	0.94	-	-	-	7.56
2	Male	46	26.54	-	-	31	36	17.9	43.8	0.99	-	+	-	4.37
3	Male	51	25.06	-	-	15	22	10.5	39.8	0.92	-	-	-	5.48
4	Male	43	24.86	+	+	22	62	12.4	41.7	0.97	-	-	-	2.24
5	Male	50	29.76	-	+	45	106	6.1	40.5	0.89	-	+	+	3.01

BMI, body mass index; Sm, smoking status; Al, alcohol intake; ALT, alanine aminotransferase; GGT, gamma-glutamyl transferase; TBIL, total bilirubin; ALB, albumin; INR, international normalized ratio of prothrombin time; HBsAg, hepatitis B surface antigen; HBsAb, hepatitis B surface antibody; HBcAb, hepatitis B core antibody; AFP, alpha-fetoprotein. +, positive; -, negative.

Results

Patient characteristics

This study included 5 HCA patients with HCA with malignant transformation and 17 patients with HCA without malignant transformation. The 5 patients with HCA with malignant transformation in this study were all males, aged 40 to 53 years (the median age: 46 years). The clinical presentations of all 5 cases were not very specific; most of them had vague abdominal pain. Two patients had a history of smoking, and 2 had a history of alcohol intake (Table 1). Hepatitis B virus (HBV) infection was not found in any of the patients. However, hepatitis C virus (HCV) infection was found in 1 patient (Case No. 5). Obesity and metabolic dysregulations (diabetes mellitus and hyperlipidemia) were not observed in any of the patients. The serum AFP levels were all ≤ 20 ng/mL. Preoperative biochemical data, including ALT, GGT, TBIL, ALB, and INR of PT, were not noticeably abnormal (Table 1). Of the 5 patients, 3 underwent right lobe irregular hepatectomy and 2 underwent left lateral lobe resection. No ascites were observed, and all patients were in Child-Pugh Class A. Case No. 2 had familial adenomatous polyposis (FAP). The size of the tumors ranged from 2 to 16 cm (median: 10 cm; mean: 8.10 ± 5.88 cm). Tumors smaller than 5 cm in diameter were found in 2 patients (Table 2). Preoperative imaging data were available for all 5 patients: they all underwent CT examinations, and 2 of them also underwent MRI examinations. Three lesions showed radiographic evidence of HCC (Figure 1): 2 with suggestive hepatic angiomyolipoma (Figure 2) and 1 with suggestive hepatocellular adenoma.

The 17 HCA patients without malignant transformation in this study included 7 males and 10 females, aged 27 to 71 years (the median age: 33 years). All the 17 patients underwent irregular hepatectomy with negative margins. Compared with the HCA patients, the ratio of males to females was higher in patients with HCA with malignant transformation ($P = 0.040$), and they had higher AFP levels ($P = 0.009$) despite being within the normal range. Furthermore, there were no significant differences in other clinicopathologic characteristics between the HCA

patients without malignant transformation and the patients with HCA with malignant transformation (Table 3).

Histological characteristics of HCAs with malignant transformation

By visual examination, the tumors were soft, round, yellow or tan masses and often with areas of necrosis, hemorrhage, and fibrosis. One specimen showed a yellow stellate nodule in the center (Figure 3). The liver background showed mild macrovesicular steatosis in 1 case and mild portal chronic inflammation in 2 cases. However, no significant fibrosis was observed in any of the 5 cases. The histological grades of HCC in the 5 cases of HCAs with malignant transformation were well differentiated. Microvascular invasion was identified in 1 case, and no angiolymphatic invasion was identified in any case. As a typical characteristic of HCC, extensive reticulum loss was observed in all of the carcinomas compared with the background adenomas that retained normal reticulin patterns (Figure 4). The surgical resection margins were negative in all 5 cases. Immunohistochemical staining for CD34 was negative in the adenomas, whereas it was positive within the cancerous areas in all 5 cases (Figure 5).

Survival

By the end of this study (October 1, 2013), all patients were alive without recurrence. The median follow-up duration was 69 months (range: 26–92 months), and the disease-free survival for the 5 patients with HCA with malignant transformation was 26–92 months (Table 1). The 17 patients with HCAs survived without HCA recurrence or malignant transformation.

Discussion

In this study, HCAs with malignant transformation were observed in 5 male patients with non-cirrhotic livers but in none of the female patients. AFP levels are higher in HCAs with malignant transformation than in HCAs without malignant transformation. The tumor size was smaller than 5 cm in 2 patients with HCAs with malignant transformation. All 5 patients undergoing hepatectomy were

Table 2 Management and outcome of 5 HCAs with malignant transformation

Case number	Tumor location	Size of adenoma (cm)	Tumor number	Operation	Membrane invasion	Vascular invasion	Differentiation	Survival (months)
1	Right lobe	10	Single	Irregular hepatectomy	No	No	Well	92
2	Left lobe	2.5	Single	Left lateral lobe resection	No	Yes ^a	Well	69
3	Left lobe	2	Single	Left lateral lobe resection	No	No	Well	69
4	Right lobe	16	Single	Irregular hepatectomy	No	No	Well	48
5	Right lobe	10	Single	Irregular hepatectomy	No	No	Well	26

^aWithout invasion of the main vascular branches but with microvascular invasion. HCAs, hepatocellular adenomas.

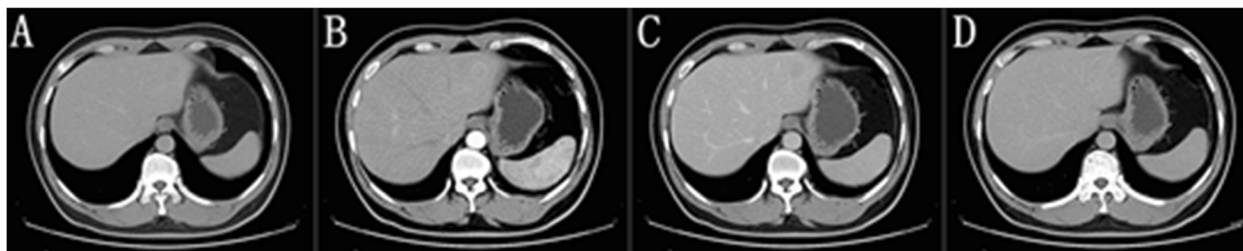


Figure 1 Enhanced computed tomography images show a small mass of approximately 2.5 cm in the largest diameter in the left lateral lobe of the liver. The tumor equidensity in the plain image (A), hyperdensity in the arterial phase (B), and hypodensity in the portal phase (C) and the equilibrium phase (D).

alive without recurrence; the disease-free survival times were 26, 48, 69, 69, and 92 months.

Malignant transformation of HCAs is very unusual because most HCAs are resected at the time of diagnosis. These data might represent an adenoma-carcinoma progression sequence in hepatocarcinogenesis, similar to that observed in colon cancer [26]. The following questions are still being investigated: when HCA develops into malignancy, which factors influence malignant transformation, and what the detailed molecular mechanisms for progression from adenoma to carcinoma are. HCA size, subtype classification, and male gender are major risk factors for malignant transformation. Obesity, diabetes, and combining HCA with FAP are possible risk factors. HBV, HCV, alcohol intake, and tobacco use may also be risk factors.

Most HCAs that become malignant are larger than 5 cm in diameter. Only 4.4% of the cases of malignant transformation were reported in tumors smaller than 5 cm in diameter [11]. However, we have observed tumors with diameters smaller than 5 cm in 2 of 5 cases of HCA, which might be partly because the surgical treatment for HCA is more rigorous in China due to the high prevalence of liver cancer [27]. Therefore, resection should be advised even if the presumptive diagnosis is adenoma with a small tumor, especially in Chinese male patients.

Based on the advancement of molecular and immunohistochemical technologies over the past few years, HCA diagnosis has dramatically changed with the new classification [23,28]. The classification was updated by the World Health Organization, and 4 additional categories

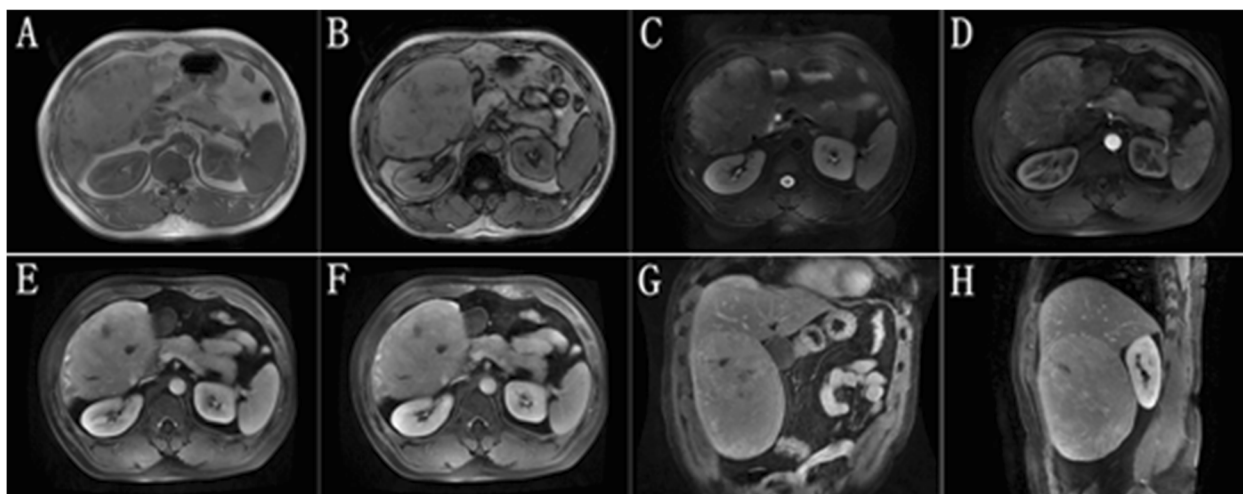


Figure 2 Magnetic resonance images show a large mass involving the right hepatic lobe. The mass with thickened tortuous vessels on the edge shows low signal intensity on T1-weighted dual-echo images (A and B), and slightly long signal intensity on T2-weighted images (C, D). In the arterial phase, heterogeneous contrast enhancement is noted. E, in the portal venous phase, the heterogeneous contrast enhancement of the tumor persists. F, the enhancement extent of the tumor remains greater than the liver parenchyma in the delayed phase. Coronal image (G) and sagittal image (H) show the tumor and non-tumorous liver simultaneously. The liver is non-cirrhotic.

Table 3 Comparison of clinical and pathologic characteristics between HCAs and HCAs with malignant transformation

Variable	HCA group (n = 17)	HCC group (n = 5)	Statistic	P value
Age (years)			t = 0.935	0.361
Mean	33	46		
Range	27–71	40–53		
Sex (cases)				0.040
Male	7	5		
Female	10	0		
Alcohol intake (cases)				0.548
Yes	3	2		
No	14	3		
Overweight (cases)				0.274
Yes (BMI ≥ 25 kg/m ²)	4	3		
No (BMI < 25 kg/m ²)	13	2		
HBsAg (cases)				1.000
Positive	1	0		
Negative	16	5		
AFP (ng/mL)	1.90 (1.51, 2.99)	4.37 (2.63, 6.52)	U = 9	0.009
ALT (U/L)	22 (13, 27)	31 (18, 40)	U = 26	0.195
GGT (U/L)	23 (13, 44)	62 (29, 122)	U = 18	0.055
TBIL (μmol/L)	8.7 (5.8, 9.8)	12.4 (8.3, 18.1)	U = 22	0.108
ALB (g/L)	41.3 ± 4.1	42.4 ± 2.6	t = 0.571	0.574
PLT (×10 ⁹ /L)	187.2 ± 40.99	227.6 ± 49.04	t = 1.857	0.078
INR	1.00 (0.93, 1.03)	0.94 (0.91, 0.98)	U = 27.5	0.238
Number of tumors (cases)				1.000
1	14	5		
≥2	3	0		
Tumor diameter (cm)	6.5 (3.5, 9.0)	10.0 (2.3, 13.0)	U = 37	0.666

HCA group includes HCAs without malignant transformation; HCC group includes HCAs with malignant transformation. Continuous variables of normal distribution were expressed as mean ± standard deviation and compared by using the independent t test. Continuous variables of non-normal distribution were expressed as medians with IQRs in parentheses and compared by using the Mann–Whitney U test. Categorical variables were compared by using the Fisher's exact test. GGT, gamma-glutamyl transferase; PLT, platelets; INR, international normalized ratio. Other abbreviations as in Table 2.

are now included: hepatocyte nuclear factor 1α-inactivated, β-catenin-activated, inflammatory, and unclassified [29]. HCAs with mutated β-catenin are more frequently interpreted as borderline lesions between HCA and HCC, and are more frequently associated with the development of unequivocal HCC than other subtypes of HCA [23,28,30].

Several specific risk factors, such as male hormone administration, glycogenosis, familial polyposis, and male gender, have now been identified [31]. The prevalence of malignant HCA is 10 times more frequent in males than in females [11]. A predominance of HCA was not observed in women in China, which could be the result of the birth control policy in China and the use of oral contraceptives in women [27]. According to the birth control policy that became effective in China since 1980, oral contraceptives are commonly used by women

before they have their first and usually the only child-birth, and an intrauterine device is then used by most Chinese women as a routine birth control method after the birthchild. In addition, estrogen can protect hepatocytes from malignant transformation. Finally, the proportion of women with heavy alcohol and tobacco use is less than that in men [32]. These reasons might partly explain why women do not show a high prevalence of HCC.

In our institute, all of the patients with HCAs with malignant transformation were males. Therefore, the management of HCA should primarily be based on gender, especially in China.

Malignant transformation of HCA in patients with FAP has been previously reported [33]. In our studies, 1 patient had FAP. Chronic alcohol abuse is known to be a major risk factor for HCC. Alcohol ingestion initiates in

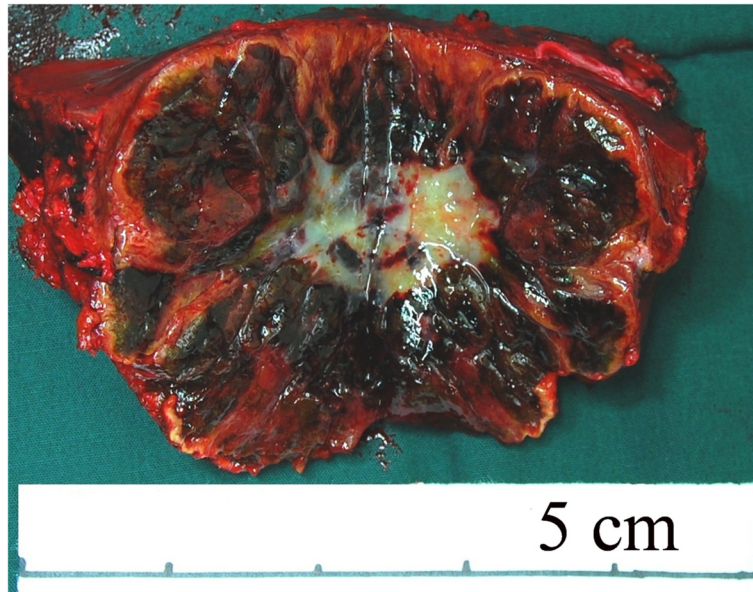


Figure 3 The gross specimen shows a well-demarcated mass in the liver measuring 4.5 cm in diameter. There are congestion and hemorrhage in most of the tumor tissues, and a yellow stellate nodule in the center of the specimen. Uninvolved liver tissues are grossly unremarkable.

the liver and may promote the development of HCC [34]. Tobacco exposure is also a risk factor for HCC. Simultaneous exposure to alcohol and tobacco is expected to promote the development of HCC in an additive and/or synergistic manner. In this study, 1 patient

had alcohol abuse, 1 had tobacco use, and 1 had both. Although alcohol intake and tobacco use may promote malignant transformation of HCA, there is no direct evidence to confirm this transformation. Most cases of HCC are attributable to hepatitis virus-related chronic

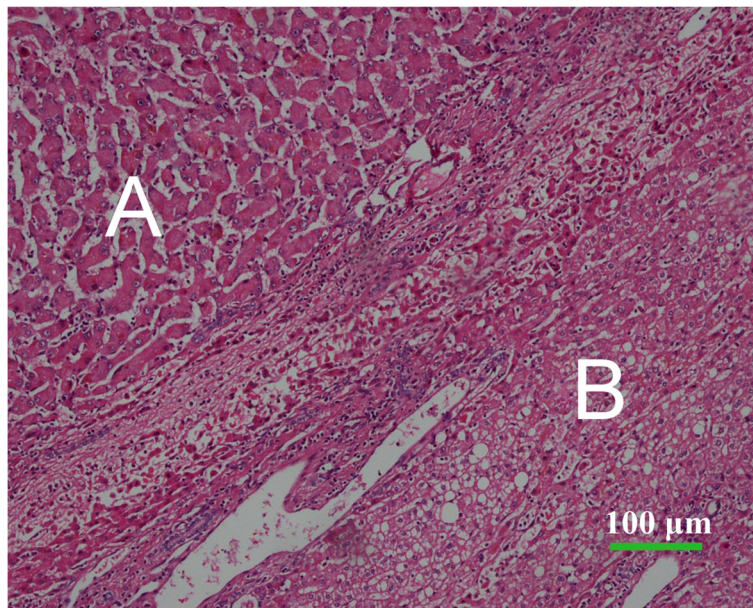


Figure 4 Microscopic findings of hepatocellular adenoma (HCA) with malignant transformation (hematoxylin-eosin staining $\times 100$). On microscopic examination, HCA is composed of uniform benign-appearing hepatocytes (A), and hepatocellular carcinoma (HCC) comprises tumor cells with a high nuclear to cytoplasmic ratio with nuclear irregularities and plates more than two cells in thickness (B).

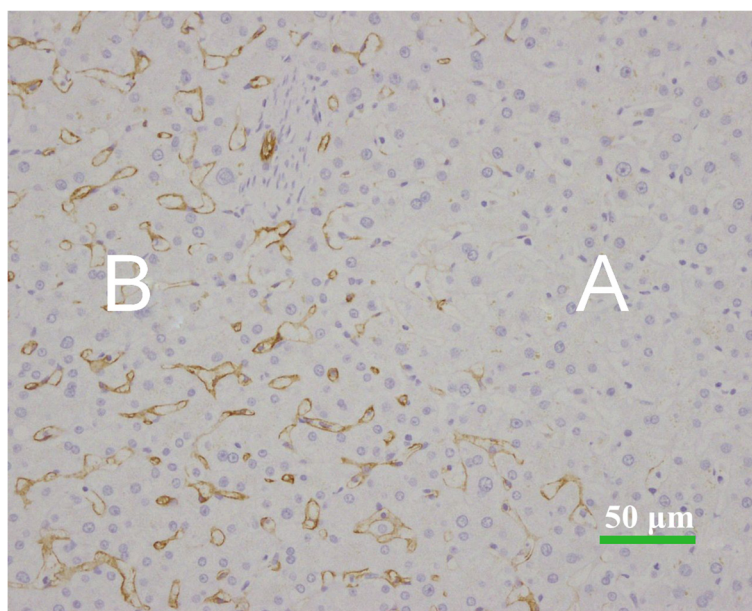


Figure 5 Immunohistochemical analysis of CD34 in HCA and HCC (immunohistochemical staining $\times 200$). The CD34 expression is negative in HCA (A), whereas the positive staining of CD34 is strong and diffused in HCC (B).

liver disease such as chronic infection by HBV and HCV. Nevertheless, there were only a few reported cases where HCC developed from HCA with HBV infection and none with HCV [35]. However, there was 1 patient with chronic infection of HCV in our study group. It is not clear yet whether HBV or HCV is a risk factor for malignant transformation of HCA. Metabolic syndrome was also reported as an emerging condition associated with the malignant transformation of HCA, particularly in men. However, it is interesting that, besides being male and 1 patient with FAP, patients in this study did not have any metabolic disease or a medication history with steroid hormones. Further investigations are needed for defining risk factors and molecular pathways of HCC from HCA.

Our study is a retrospective study performed at a single center, and further studies at multiple centers are needed to confirm our conclusions. We found that AFP levels were higher in HCAs with malignant transformation than in HCAs, despite being within the normal range. We are not able to explain this finding and its value.

Conclusions

To summarize, our study suggested that HCCs can arise from HCAs in male patients without cirrhosis who may not have any known risk factors for HCC. Therefore, complete resection is recommended in male patients even if the presumptive diagnosis is HCA in a small size.

Consent

Written informed consent was obtained from the patient for the publication of this report and any accompanying images.

Competing interests

The authors declare that they have no competing interests.

Authors' contributions

S-L A, L-M W, and J-X W conceived of the study and participated in its design and coordination. W S, S-L A, and F T acquired pathologic and radiographic images. F-Q L, F W, and W-B Y performed the statistical analyses and interpretation. S-L A, W-Q R, and L F drafted the manuscript. All authors read, edited, and approved the final manuscript.

Acknowledgements

The study was supported by the Peking Union Medical College Youth Fund and the Fundamental Research Funds for the Central Universities (No. 33320140163).

Author details

¹Department of Abdominal Surgery, Cancer Institute and Hospital, Chinese Academy of Medical Sciences and Peking Union Medical College, 17 Panjiayuananli Road, Chaoyang District, Beijing 100021, P. R. China.

²Department of Pathology, Cancer Institute and Hospital, Chinese Academy of Medical Sciences and Peking Union Medical College, Beijing 100021, P. R. China.

Received: 22 September 2014 Accepted: 22 December 2014

Published online: 24 May 2015

References

1. Rooks JB, Ory HW, Ishak KG, Strauss LT, Greenspan JR, Hill AP, et al. Epidemiology of hepatocellular adenoma. The role of oral contraceptive use. *JAMA*. 1979;242:644–8.
2. Leese T, Farges O, Bismuth H. Liver cell adenomas. A 12-year surgical experience from a specialist hepato-biliary unit. *Ann Surg*. 1988;208:558–64.
3. Reddy SK, Kishani PS, Sullivan JA, Koeberl DD, Desai DM, Skinner MA, et al. Resection of hepatocellular adenoma in patients with glycogen storage disease type Ia. *J Hepatol*. 2007;47:658–63.

4. Velazquez I, Alter BP. Androgens and liver tumors: Fanconi's anemia and non-Fanconi's conditions. *Am J Hematol*. 2004;77:257–67.
5. Theruvath TP, Izar B, McGillicuddy J, Stewart E, Reuben A, Chavin KD. Hepatocellular adenoma in men: a rare cause for liver resection. *Am Surg*. 2011;77:373–6.
6. Monchal T, Barbier L, Hornez E, Marciano S, Dales JP, Berdah S, et al. Ruptured liver cell adenoma in man: great fortune in misfortune. *Acta Chir Belg*. 2010;110:555–7.
7. Goudard Y, Rouquie D, Bertocchi C, Daligand H, Baton O, Lahutte M, et al. Malignant transformation of hepatocellular adenoma in men. *Gastroenterol Clin Biol*. 2010;3:168–70.
8. Psatha EA, Semelka RC, Armao D, Woosley JT, Firat Z, Schneider G. Hepatocellular adenomas in men: MRI findings in four patients. *J Magn Reson Imaging*. 2005;22:258–64.
9. Dokmak S, Paradis V, Vilgrain V, Sauvanet A, Farges O, Valla D, et al. A single-center surgical experience of 122 patients with single and multiple hepatocellular adenomas. *Gastroenterology*. 2009;137:1698–705.
10. Bioulac-Sage P, Laumonier H, Couchy G, Le Bail B, Sa Cunha A, Rullier A, et al. Hepatocellular adenoma management and phenotypic classification: the Bordeaux experience. *Hepatology*. 2009;50:481–9.
11. Stoot JH, Coelen RJ, De Jong MC, Dejong CH. Malignant transformation of hepatocellular adenomas into hepatocellular carcinomas: a systematic review including more than 1600 adenoma cases. *HPB*. 2010;12:509–22.
12. Perret AG, Mosnier JF, Porcheron J, Cuilleron M, Berthoux P, Boucheron S. Role of oral contraceptives in the growth of a multilobular adenoma associated with a hepatocellular carcinoma in a young woman. *J Hepatol*. 1996;25:976–9.
13. Ferrell LD. Hepatocellular carcinoma arising in a focus of multilobular adenoma. A case report. *Am J Surg Pathol*. 1993;17:525–9.
14. Tesluk H, Lawrie J. Hepatocellular adenoma. Its transformation to carcinoma in a user of oral contraceptives. *Arch Pathol Lab Med*. 1981;105:296–9.
15. Herman P, Machado MA, Volpe P, Pugliese V, Vianna MR, Bacchella T, et al. Transformation of hepatic adenoma into hepatocellular carcinoma in patients with prolonged use of oral contraceptives. *Rev Hosp Clin Fac Med Sao Paulo*. 1994;49:30–3 [in Portuguese].
16. Gordon SC, Reddy KR, Livingstone AS, Jeffers LJ, Schiff ER. Resolution of a contraceptive-steroid-induced hepatic adenoma with subsequent evolution into hepatocellular carcinoma. *Ann Intern Med*. 1986;105:547–9.
17. Korula J, Yellin A, Kanel G, Campofiori G, Nichols P. Hepatocellular carcinoma coexisting with hepatic adenoma. Incidental discovery after long-term oral contraceptive use. *West J Med*. 1991;155:416–8.
18. Gyorffy EJ, Bredfeldt JE, Black WC. Transformation of hepatic cell adenoma to hepatocellular carcinoma due to oral contraceptive use. *Ann Intern Med*. 1989;110:489–90.
19. Closset J, Veys I, Peny MO, Braude P, Van Gansbeke D, Lambilliotte JP, et al. Retrospective analysis of 29 patients surgically treated for hepatocellular adenoma or focal nodular hyperplasia. *Hepatogastroenterology*. 2000;47:1382–4.
20. Foster JH, Berman MM. The malignant transformation of liver cell adenomas. *Arch Surg*. 1994;129:712–7.
21. Ito M, Sasaki M, Wen CY, Nakashima M, Ueki T, Ishibashi H, et al. Liver cell adenoma with malignant transformation: a case report. *World J Gastroenterol*. 2003;9:2379–81.
22. Nagorney DM. Are hepatic adenomas premalignant? *HPB Surg*. 1996;10:59–61.
23. Zucman-Rossi J, Jeannot E, Nhieu JT, Scoazec JY, Guettier C, Rebouissou S, et al. Genotype-phenotype correlation in hepatocellular adenoma: new classification and relationship with HCC. *Hepatology*. 2006;43:515–24.
24. Farges O, Dokmak S. Malignant transformation of liver adenoma: an analysis of the literature. *Dig Surg*. 2010;27:32–8.
25. Bioulac-Sage P, Sempoux C, Possenti L, Frulio N, Laumonier H, Laurent C, et al. Pathological diagnosis of hepatocellular cellular adenoma according to the clinical context. *Int J Hepatol*. 2013;2013:253–61.
26. Gordon SC, Reddy KR, Livingstone S, Jeffers LJ, Schiff ER. Resolution of a contraceptive-steroid-induced hepatic adenoma with subsequent evolution into hepatocellular carcinoma. *Ann Intern Med*. 1986;105:547–9.
27. Lin H, van den Esschert J, Liu C, van Gulik TM. Systematic review of hepatocellular adenoma in China and other regions. *J Gastroenterol Hepatol*. 2011;26:28–35.
28. Bioulac-Sage P, Rebouissou S, Thomas C, Blanc JF, Saric J, Sa Cunha A, et al. Hepatocellular adenoma subtype classification using molecular markers and immunohistochemistry. *Hepatology*. 2007;46:740–8.
29. Bosman FT, Carneiro F, editors. WHO classification of tumours of the digestive system, revised. 4th ed. France: Lyon; 2010.
30. Chen PJ. Genetic mutation in hepatic adenoma: seeing is believing. *J Hepatol*. 2006;45:767–9.
31. Bioulac-Sage P, Laumonier H, Laurent C, Zucman-Rossi J, Balabaud C. Hepatocellular adenoma: what is new in 2008. *Hepatol Int*. 2008;2:316–21.
32. Yeh SH, Chen PJ. Gender disparity of hepatocellular carcinoma: the roles of sex hormones. *Oncology*. 2010;78 Suppl 1:172–9.
33. Toiyama Y, Inoue Y, Yasuda H, Yoshiyama S, Araki T, Miki C, et al. Hepatocellular adenoma containing hepatocellular carcinoma in a male patient with familial adenomatous polyposis coli: report of a case. *Surg Today*. 2011;41:1442–6.
34. Dong C, Yoon YH, Chen CM, Yi HY. Heavy alcohol use and premature death from hepatocellular carcinoma in the United States, 1999–2006. *J Stud Alcohol Drugs*. 2011;72:892–902.
35. Seo JM, Lee SJ, Kim SH, Park CK, Ha SY. Hepatocellular carcinoma arising from hepatocellular adenoma in a hepatitis B virus-associated cirrhotic liver. *Clin Radiol*. 2012;67:329–33.

Submit your next manuscript to BioMed Central and take full advantage of:

- Convenient online submission
- Thorough peer review
- No space constraints or color figure charges
- Immediate publication on acceptance
- Inclusion in PubMed, CAS, Scopus and Google Scholar
- Research which is freely available for redistribution

Submit your manuscript at
www.biomedcentral.com/submit

